

Windows 10 Setup Guide



Content

Windows 10 Installation 2

Stripping down Windows 10..... 13

Driver & Software Installation 14

WASAPI 15

Highend-AudioPC Shop 16

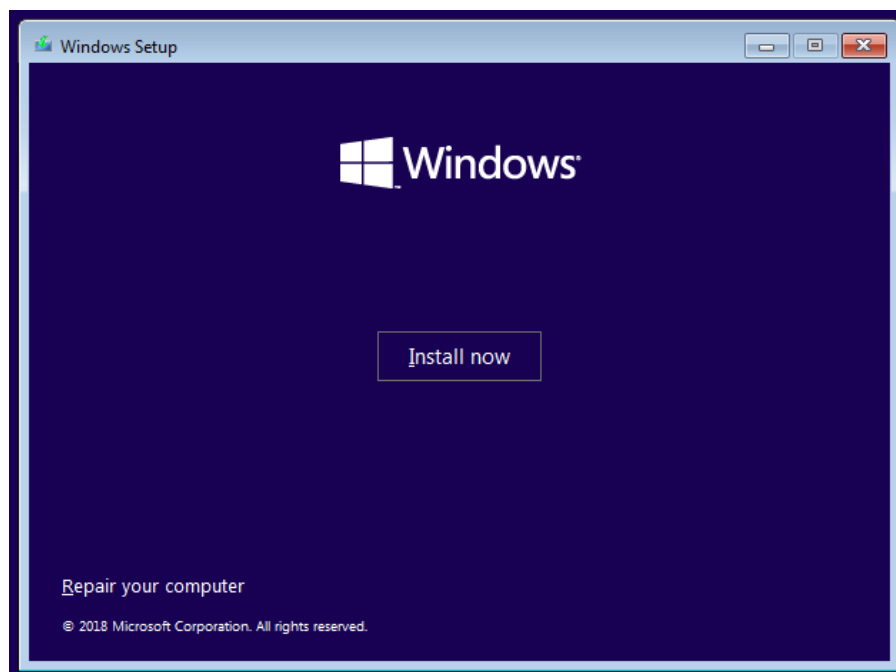
Windows 10 Installation

INFO: This guide is based on Windows 1809 edition of Windows 10.

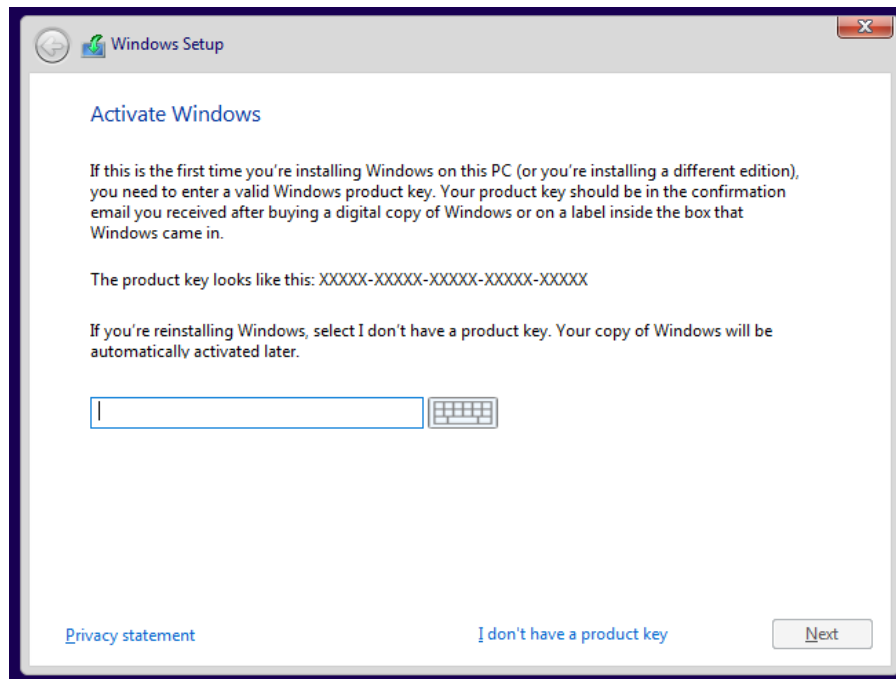
Boot your Windows 10 USB Stick or your DVD. Choose the appropriate settings and go on. Setup will be familiar as it will be similar to a normal Windows installation.



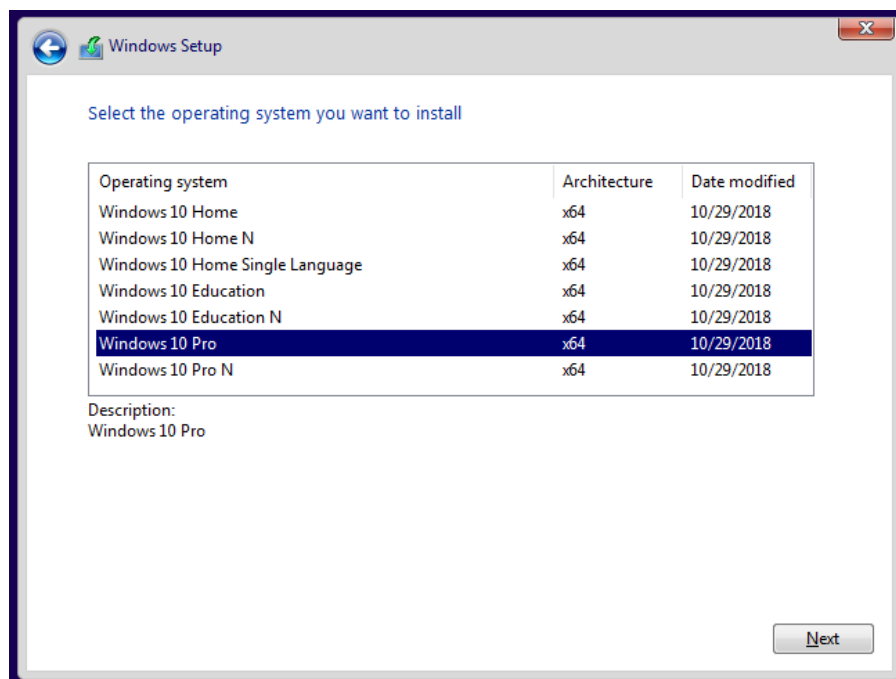
Click on the "Install now" button.



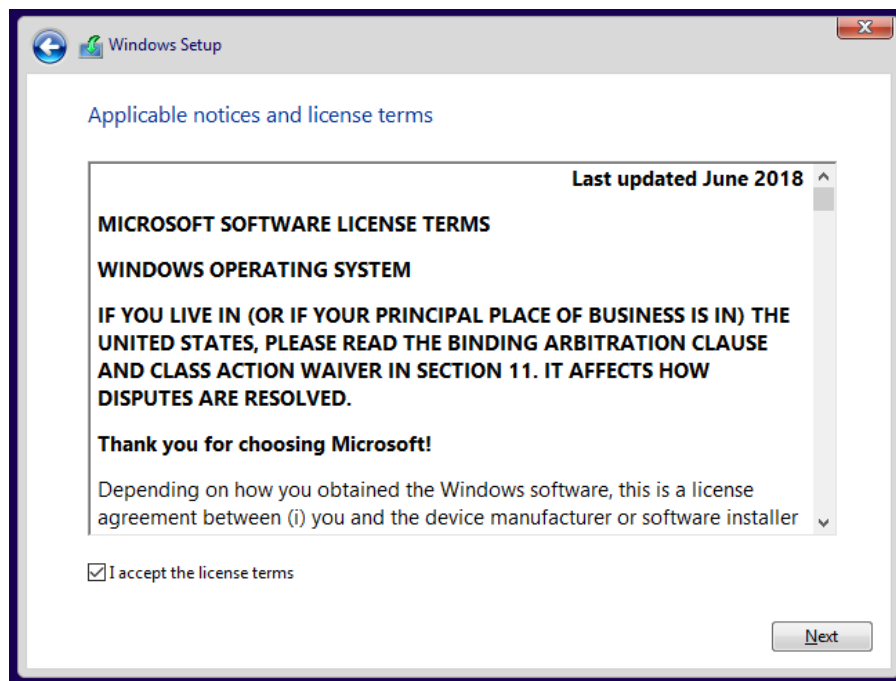
If you do not have a product key simply click on “I don’t have a product key” to continue the installation.



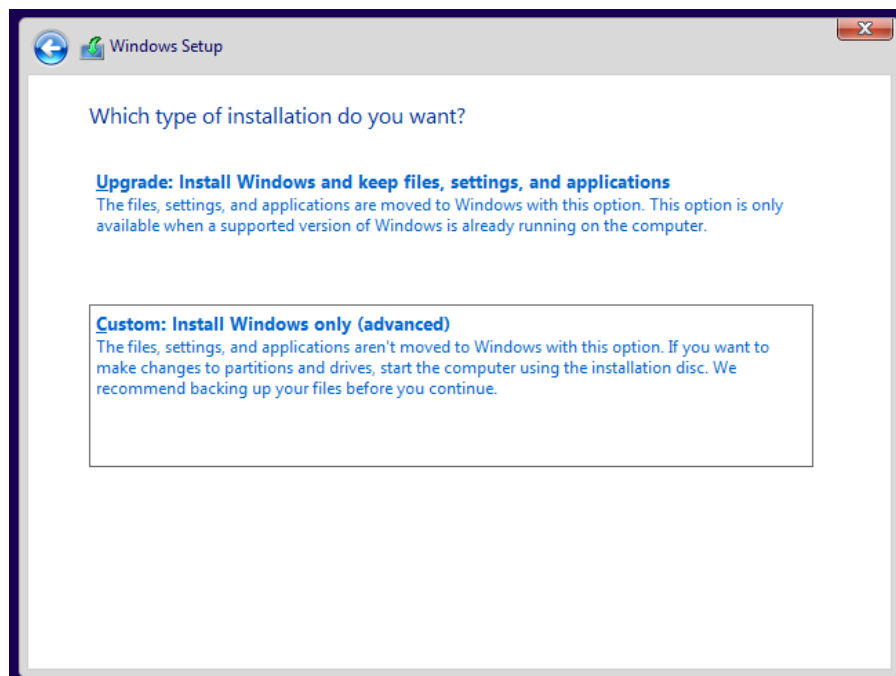
Chose the Windows 10 version you have a license for. We highly recommend to install the Pro or Enterprise Edition of Windows 10. **The Home Edition in all its variants is clearly not recommended!**



Accept License terms and click next.

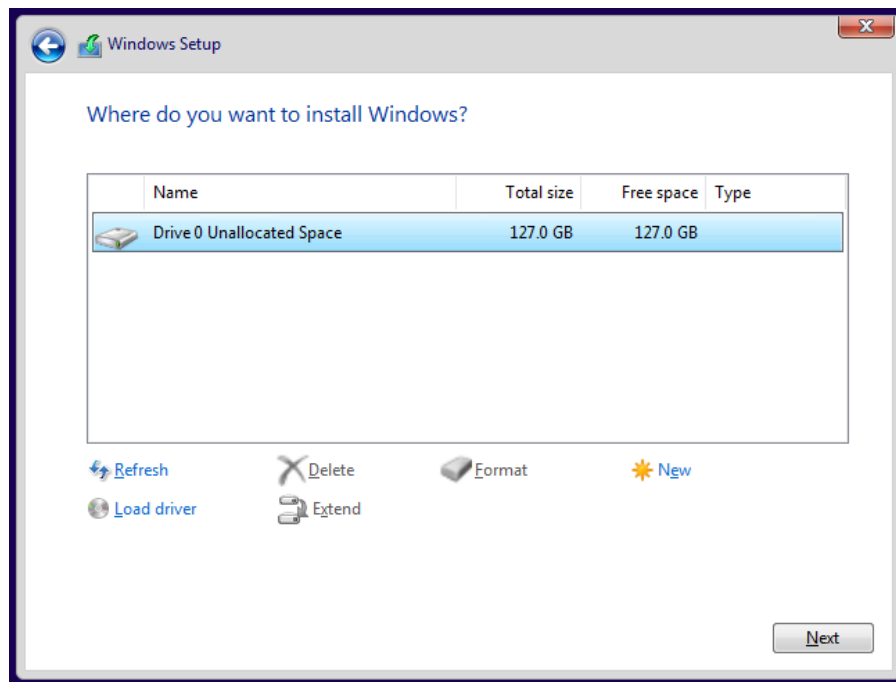


Choose Custom: Install Windows only (advanced)

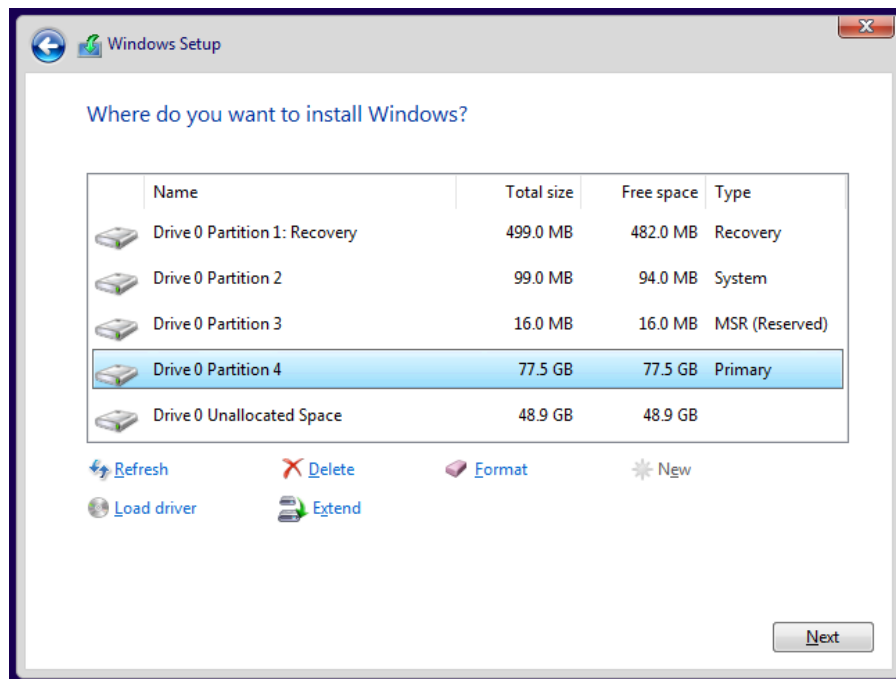


ATTENTION: It is also possible to upgrade an existing installation, but this is absolutely not recommended. Let's go on and create the partition according to your needs.

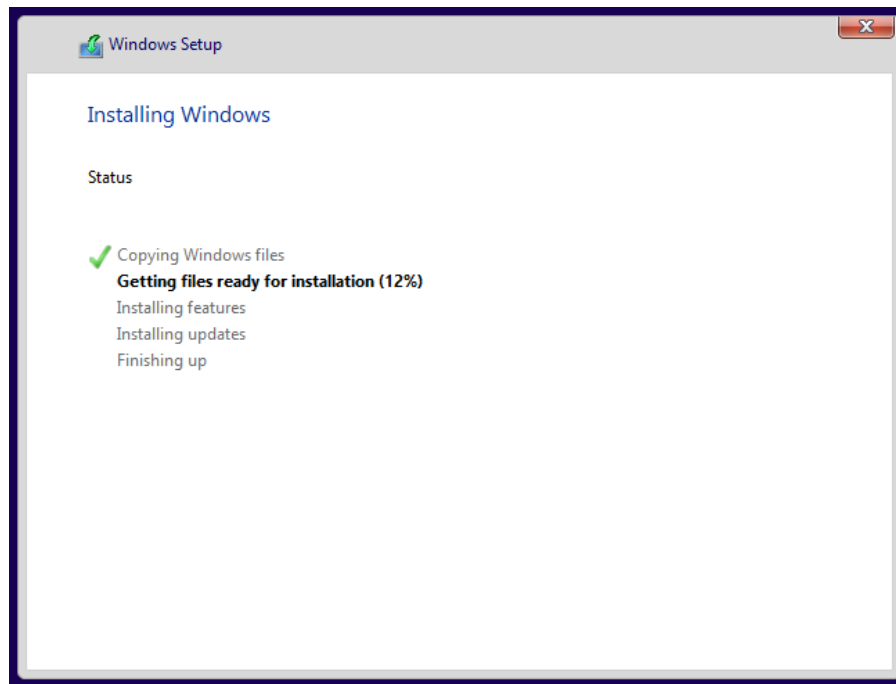
Click on “New” to create the primary partition for your Windows installation.



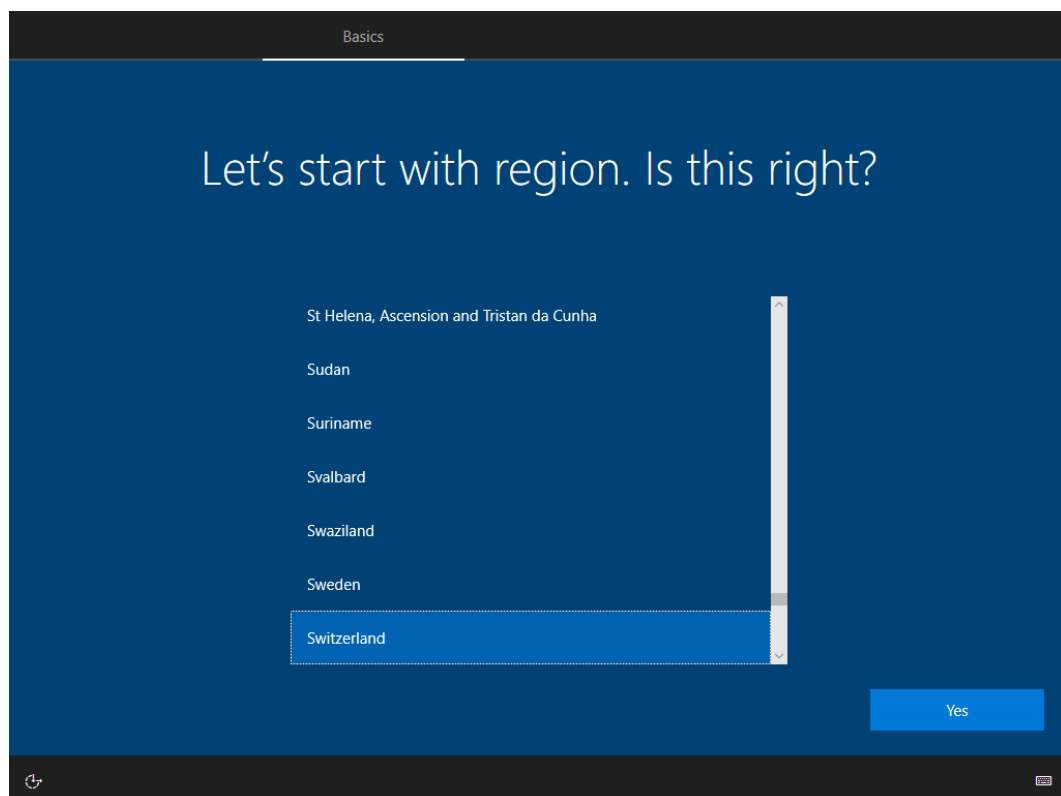
ATTENTION: All other automatically created partitions are normal and mandatory, do not delete them. Select the “Primary” partition you just created to install Windows 10. If you have left over some “Unallocated Space” you can create a second partition right away or later on, either way this is optional.



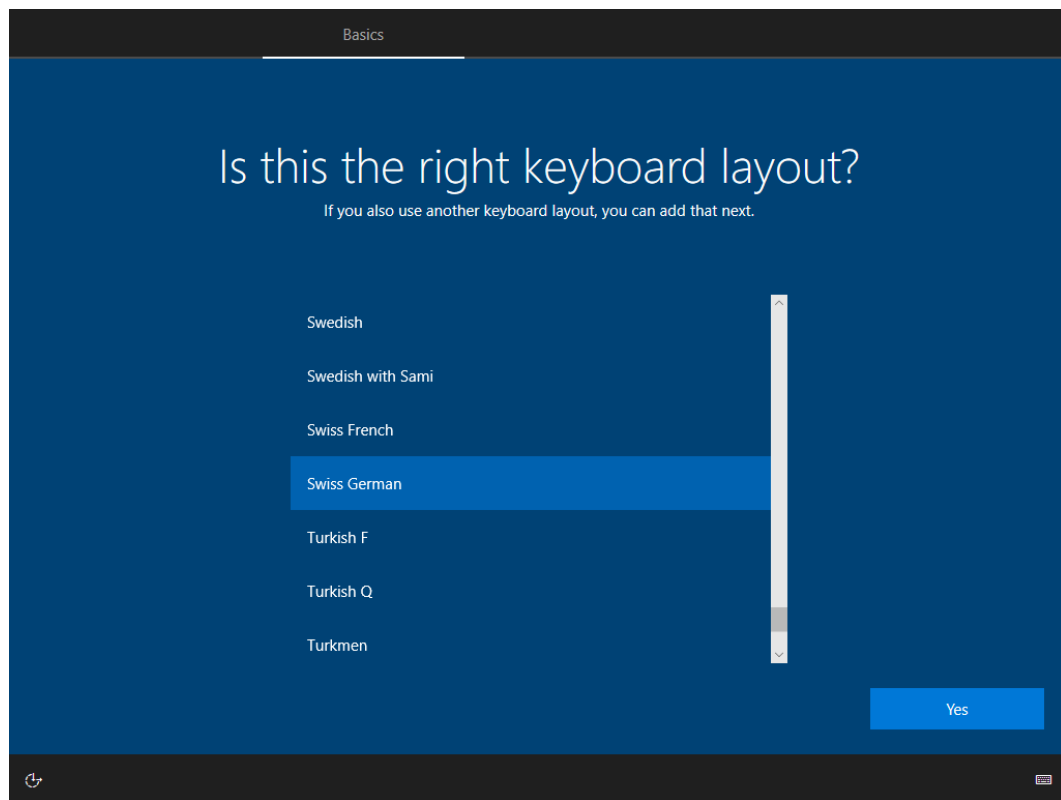
That's it, Windows is now going to be installed and will be ready within a few minutes.



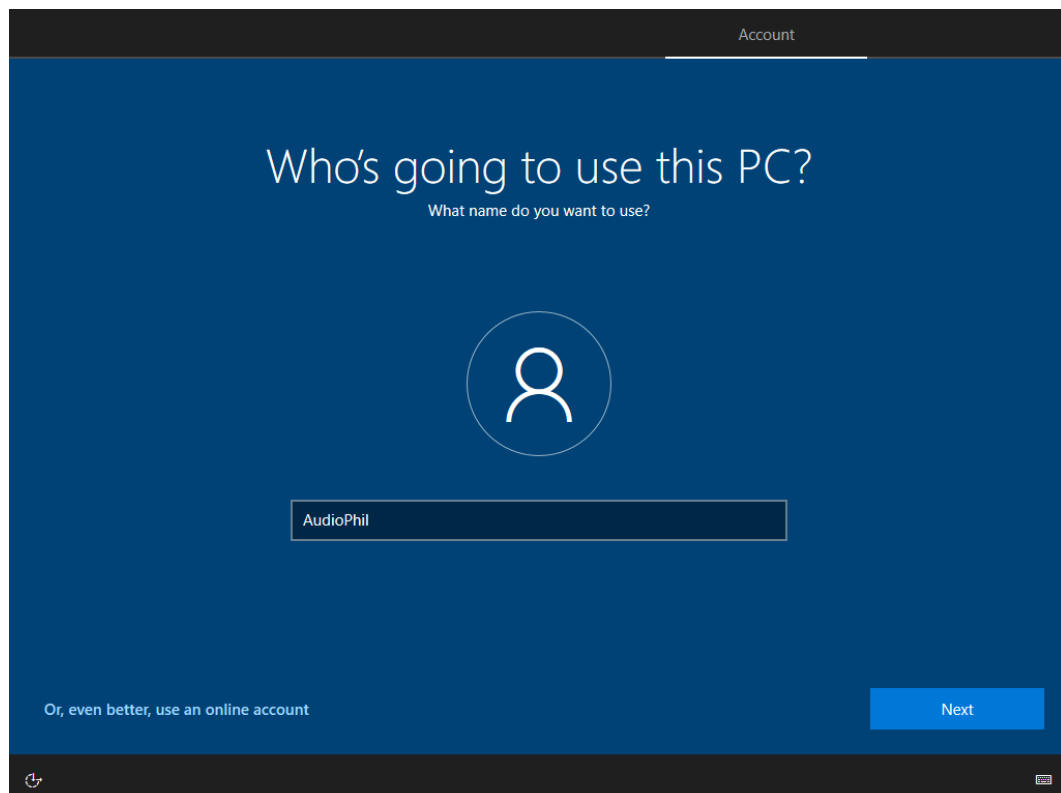
After the installation was successfully completed you will have to choose your region.



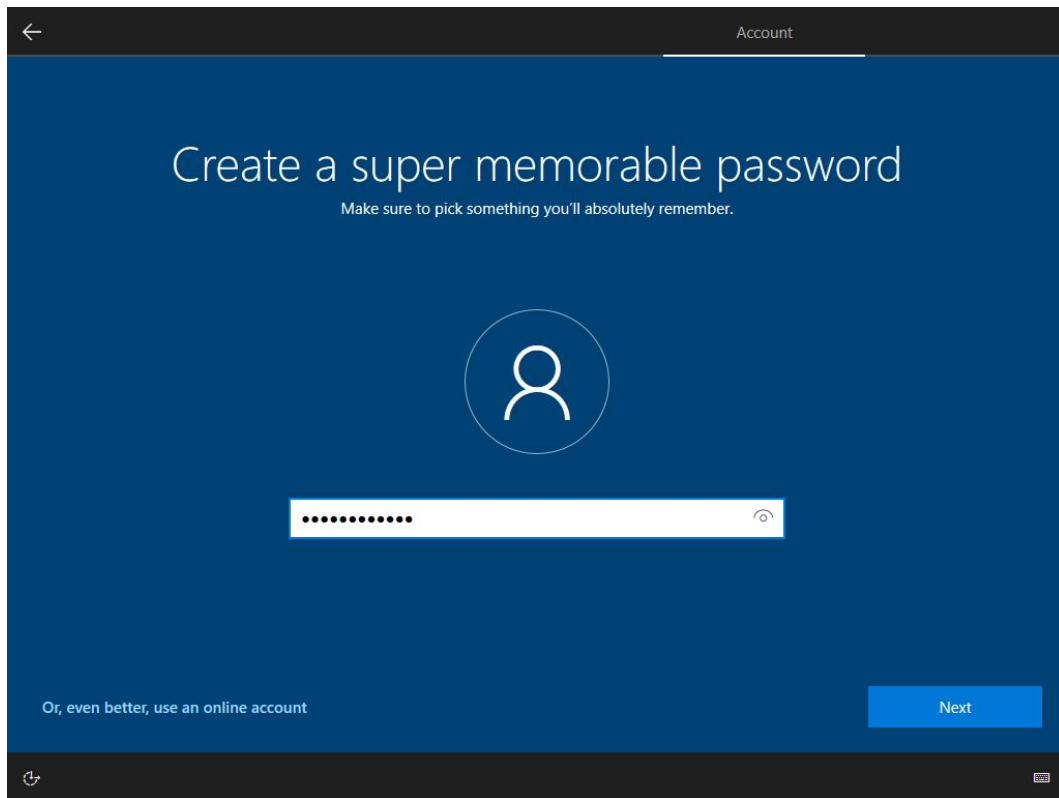
Then select your keyboard layout.



After the preparation and reboot of the OS you will have to choose a username and password. It is absolutely crucial that you **do not use any special characters in your username!**

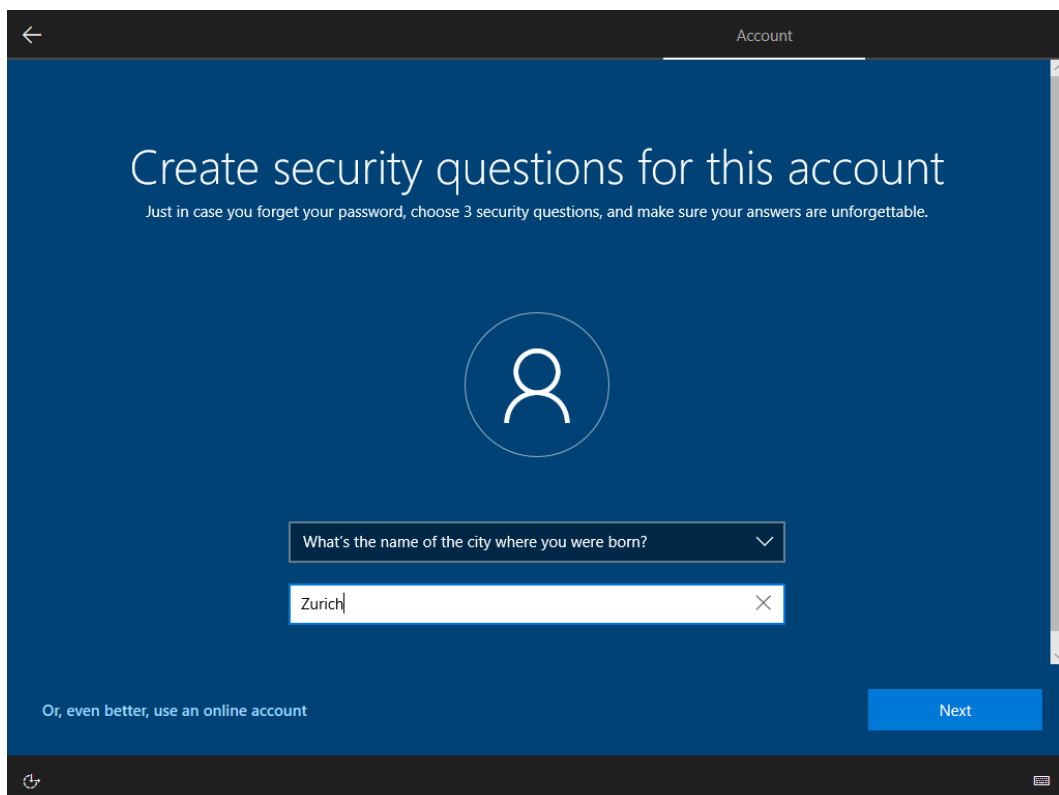


Your password has to contain small and capital letters as well as numbers and at least one special character.



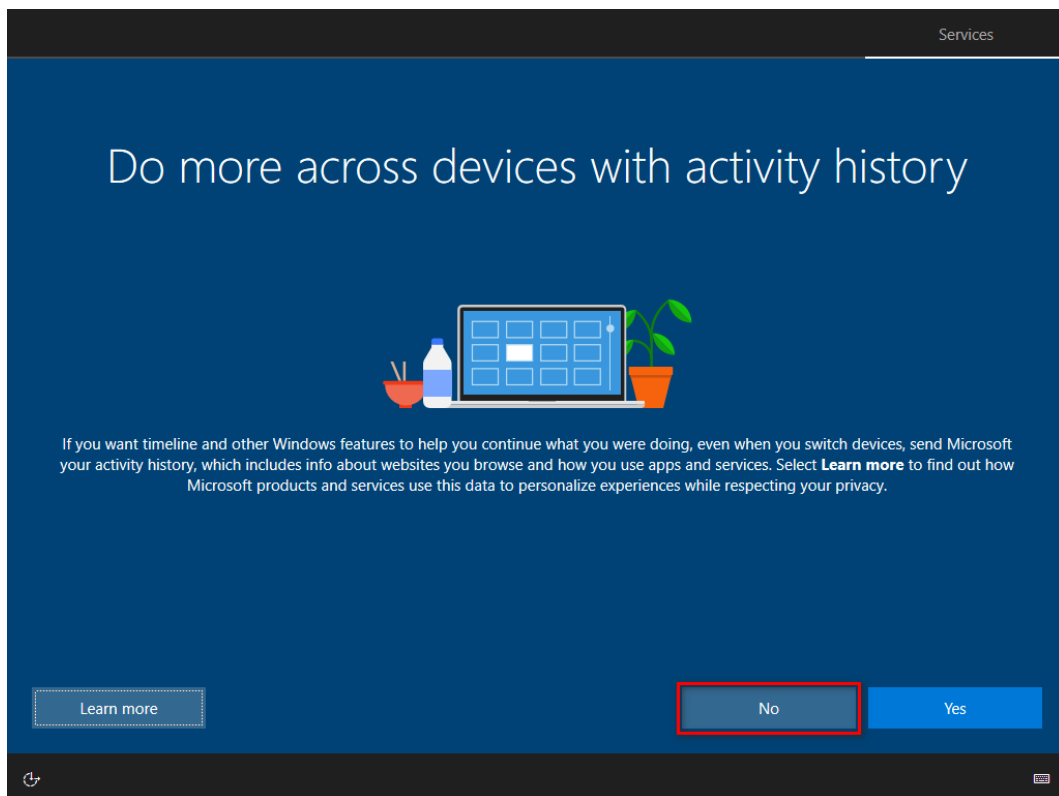
This screenshot shows the 'Create a super memorable password' step in the Windows 10 account setup process. The interface has a dark blue background with a white user icon in the center. Below the icon is a password input field with a white border and a small eye icon on the right. At the bottom left, there is a link that says 'Or, even better, use an online account'. At the bottom right, there is a blue 'Next' button. The top of the screen has a dark bar with a back arrow on the left and the word 'Account' on the right.

Answer all the security questions.

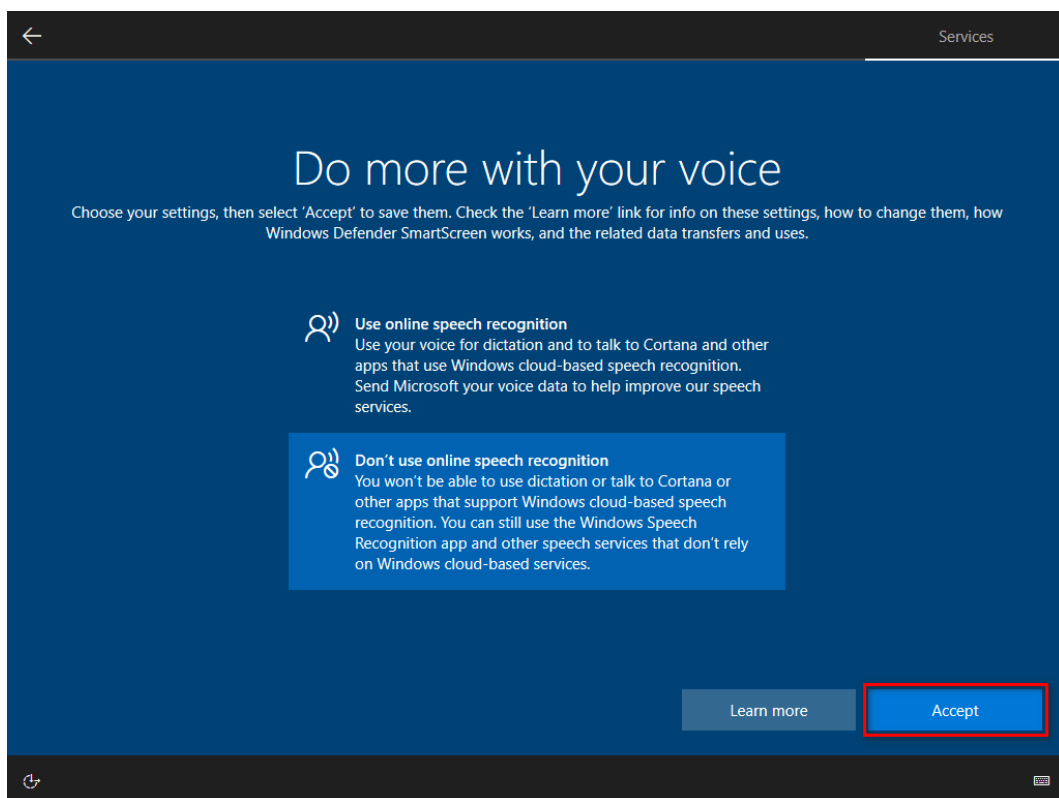


This screenshot shows the 'Create security questions for this account' step in the Windows 10 account setup process. The interface has a dark blue background with a white user icon in the center. Below the icon is a dropdown menu with the text 'What's the name of the city where you were born?' and a downward arrow. Below the dropdown is a text input field with the word 'Zurich' and a small 'X' icon on the right. At the bottom left, there is a link that says 'Or, even better, use an online account'. At the bottom right, there is a blue 'Next' button. The top of the screen has a dark bar with a back arrow on the left and the word 'Account' on the right.

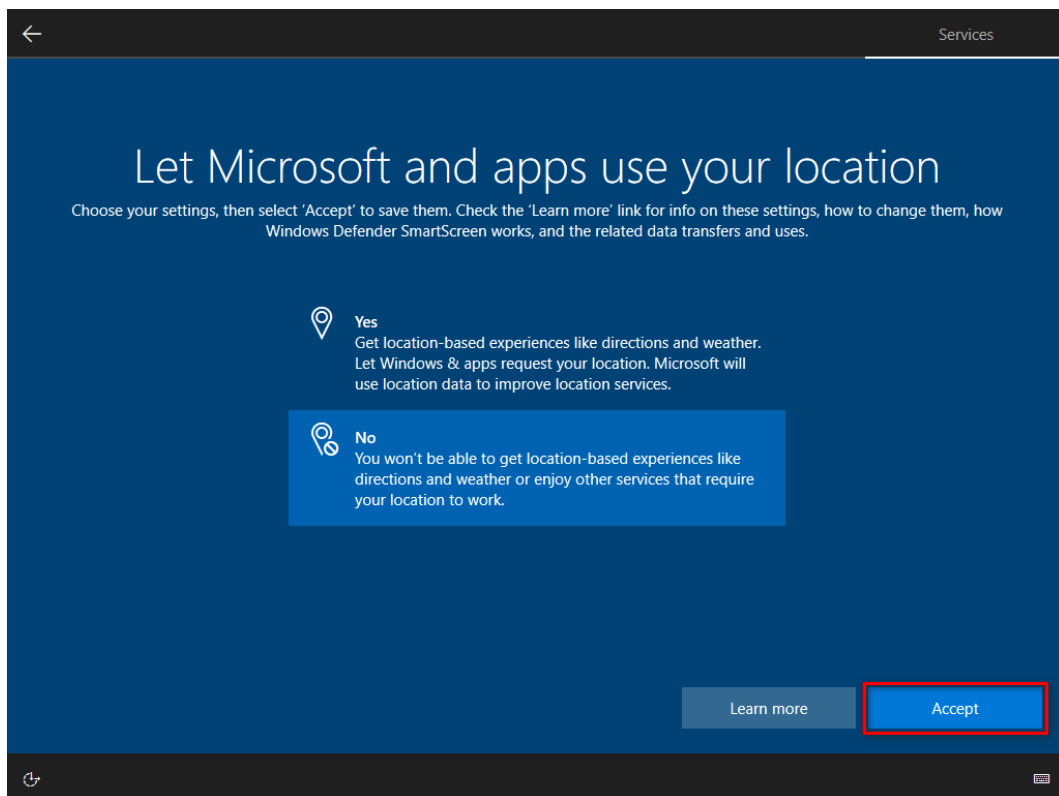
Do not activate the activity history feature.



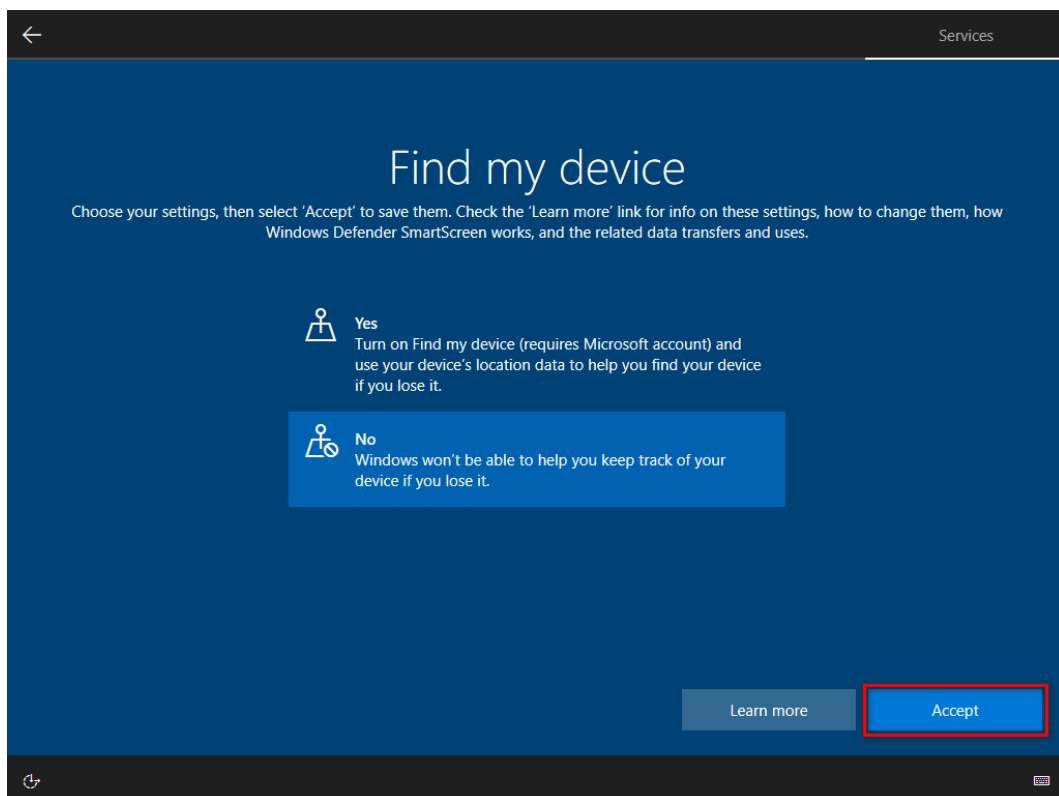
Do not use online speech recognition.



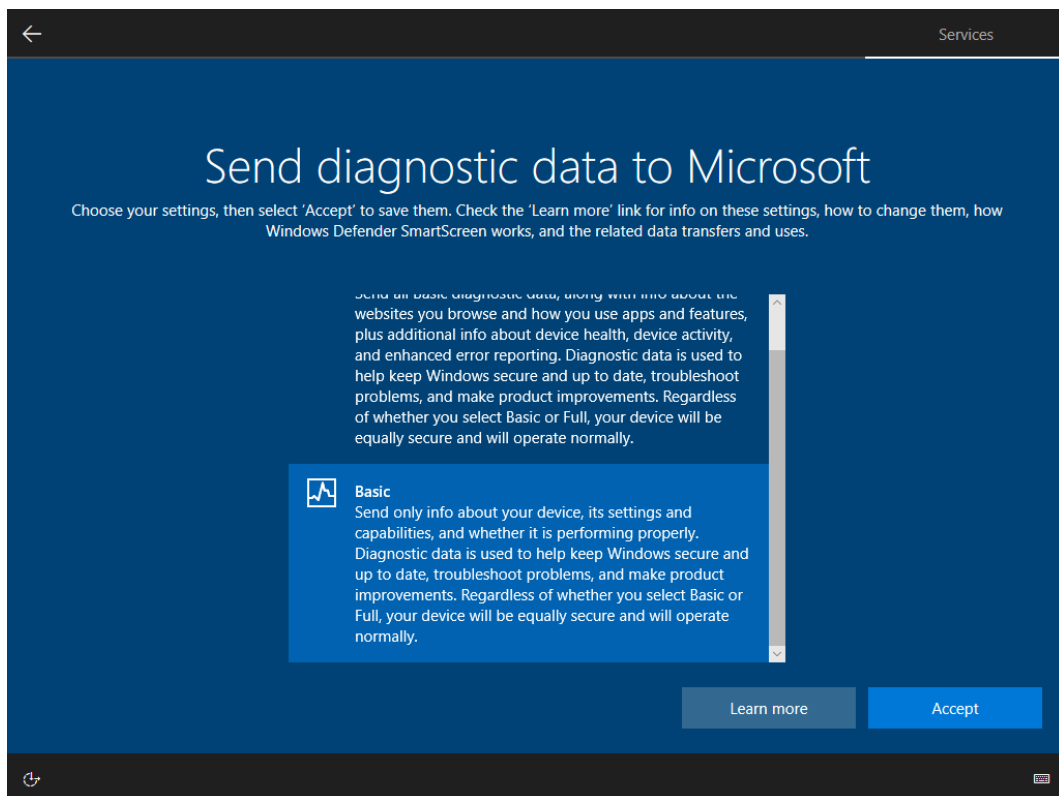
Do not let Microsoft and apps use your location.



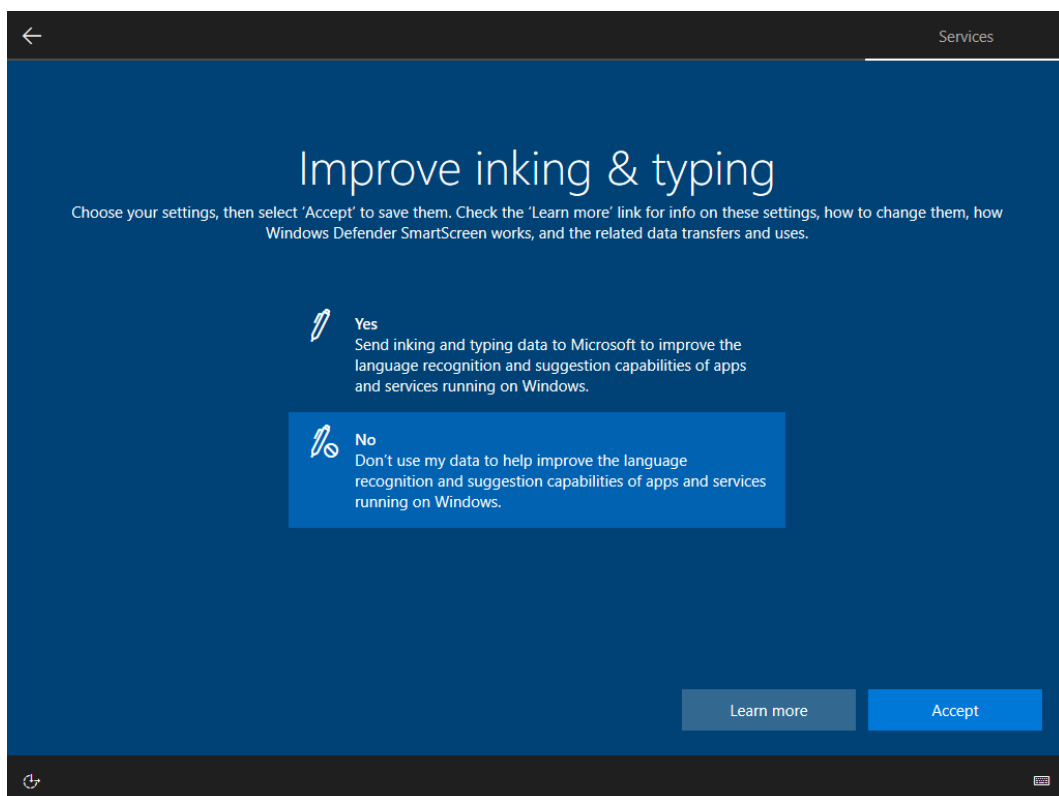
Do not use the "Find my device" feature.



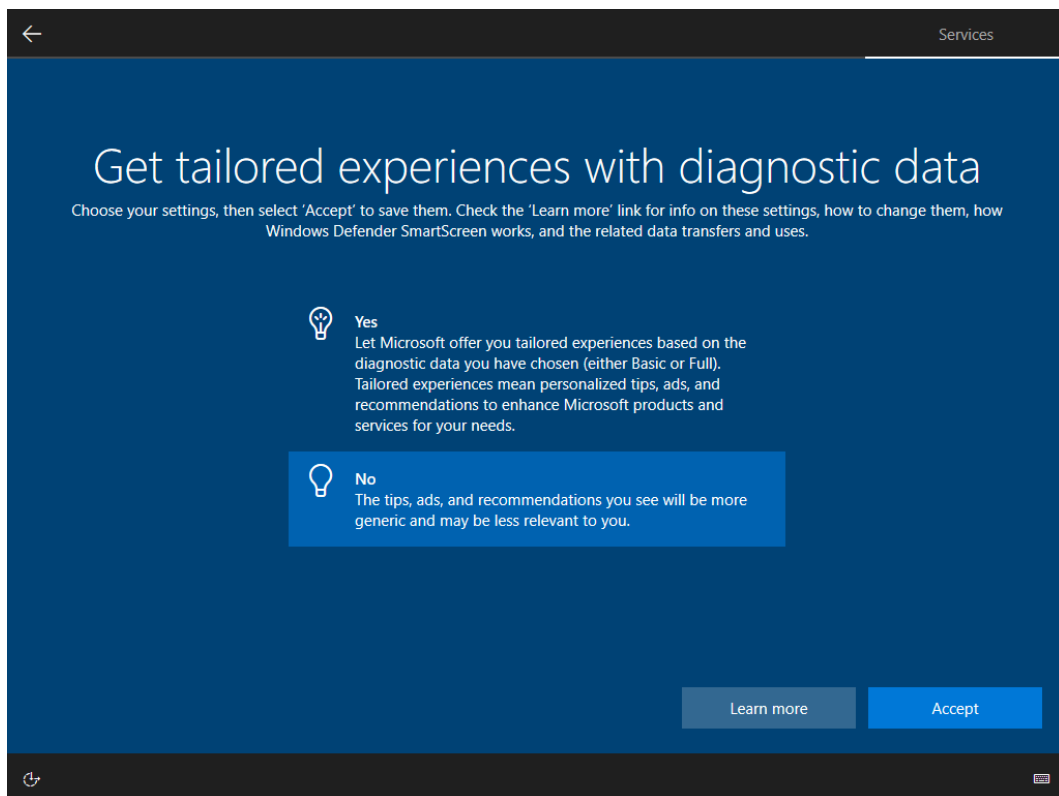
Send only basic diagnostic data to Microsoft.



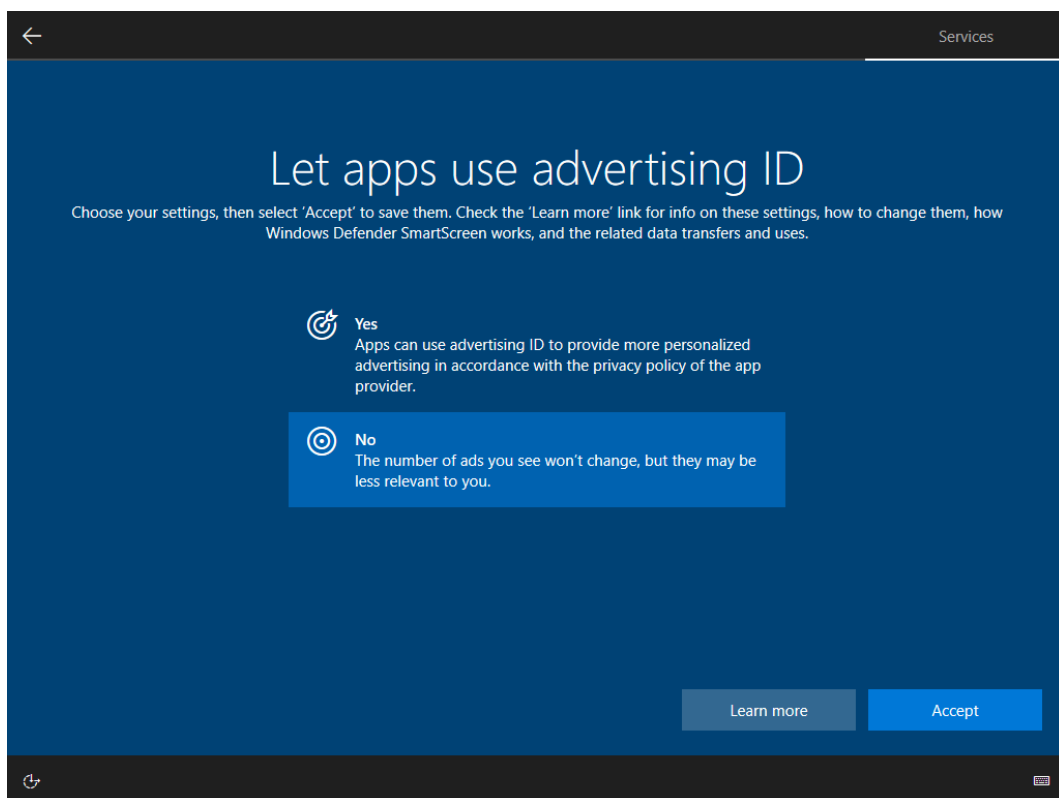
Do not improve inking & typing.



No tailored experiences with diagnostic data either.

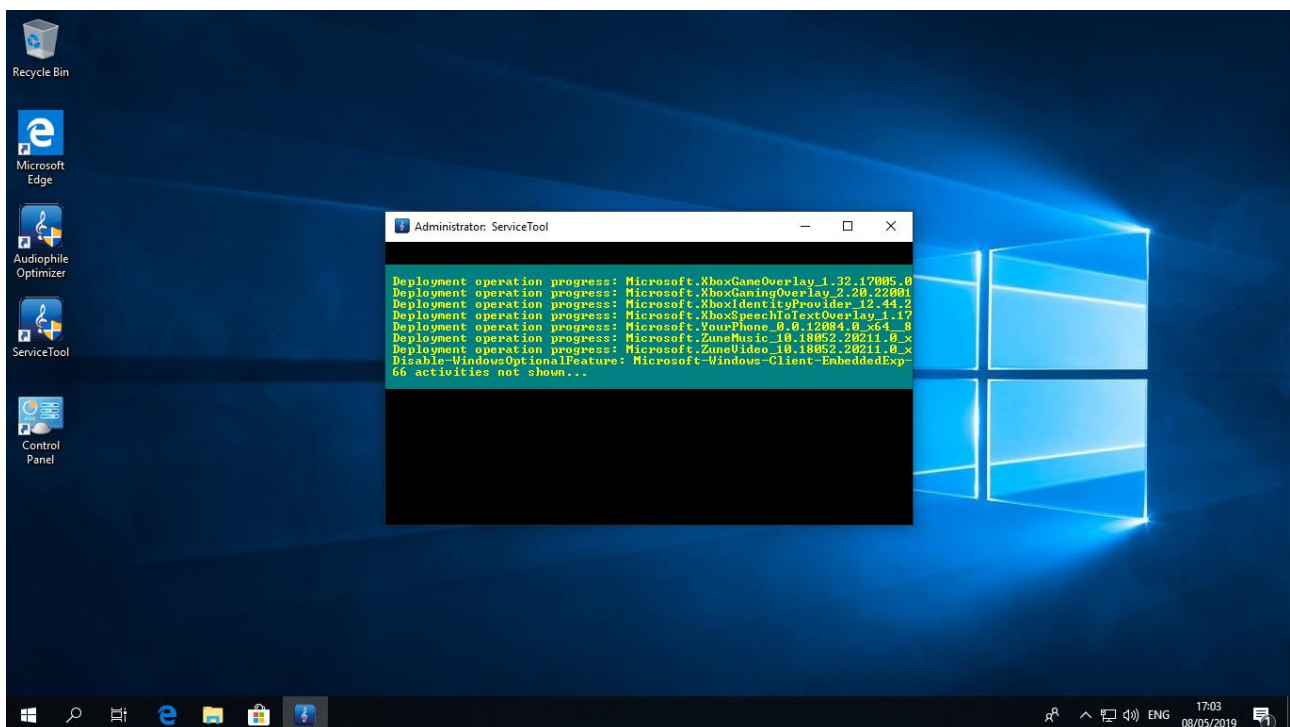
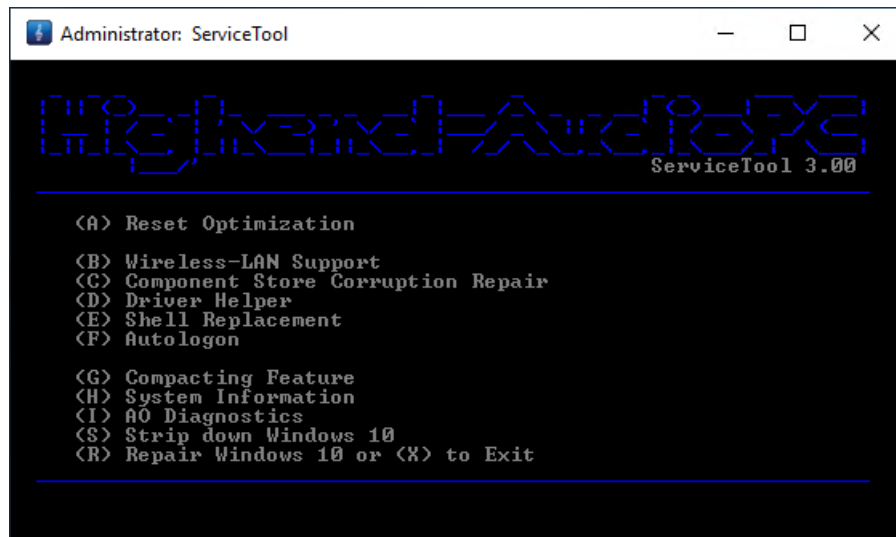


Same applies for advertising ID, we do not want that.



Stripping down Windows 10

Unlike the Windows Server operating systems Windows 10 comes absolutely loaded with many applications you definitely do not want on your music server. Our ServiceTool has a feature to completely strip down Windows 10 to its minimum. **Launch the ServiceTool and simply press “S”** to start the process, it will remove dozens and dozens of unneeded but pre-installed software packages you’ll never need.



Driver & Software Installation

Once the GUI Edition is installed, please install all device drivers needed in device manager. Install the latest chipset drivers of your motherboard, the latest drivers for your network card, and install all drivers needed for your DAC or DDC and anything else that shows a missing driver in the device manager. **Do not install the 3rd party driver of your video adapter if not absolutely needed.** Many graphic card drivers set system priority in favor for the graphic card. If you really need the graphic cards driver, try to install only the INF files with PnPUtil and not the whole driver package.

How to use PnPUtil: <http://msdn.microsoft.com/en-us/library/windows/hardware/ff550428%28v=vs.85%29.aspx>

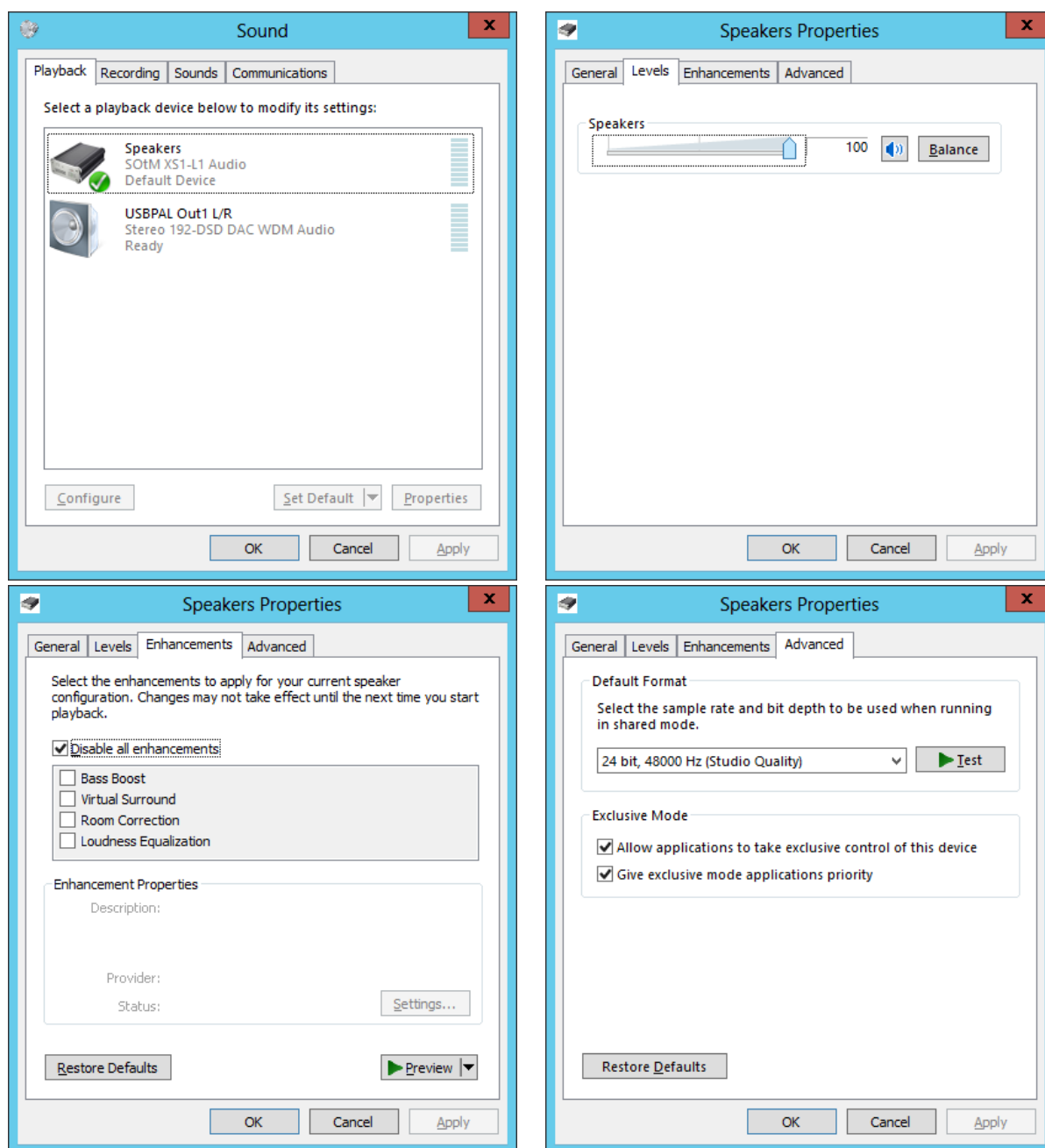
Roon, Hysolid, Bug head Emperor, JPLAYmini, HQPlayer, Foobar2000 & Co.

Once all drivers are setup, install JPLAY (if you plan to use JPLAY) and reboot. On a SinglePC or a ControlPC, also install the music player of your choice. For the very best sound quality we recommend Bug head Emperor or Hysolid. JPLAYmini and HQPlayer work in core mode, but require a tool like Total Commander to choose files for playback. Roon offers the best overall experience and usability.

WASAPI

You can skip this section if you don't use WASAPI. If you have multiple WASAPI capable devices, choose one as your standard sound device. After the conversion to minimal-server edition, you won't be able to switch between different WASAPI devices inside JPLAY settings anymore. **It is very important to set the volume to 100% if your device supports that option.** Also disable all enhancements in the properties of your device. All these settings do not matter if you use ASIO or Kernel-Streaming.

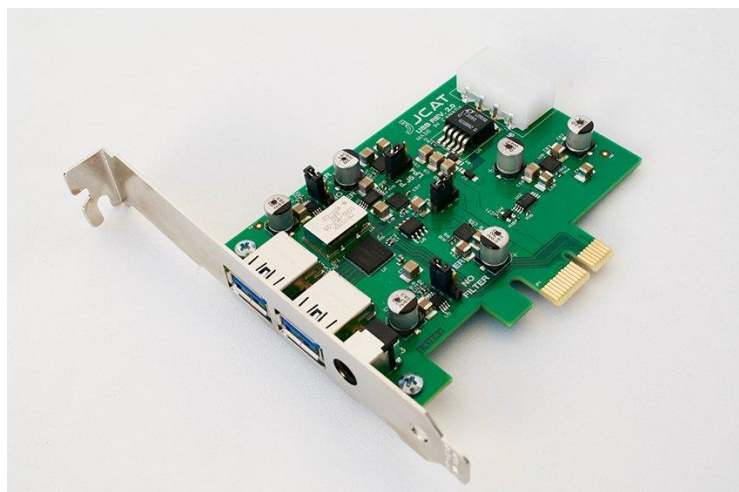
INFO: Every server OS has all windows audio services disabled by default. If you need WASAPI, or your driver is related to WASAPI architecture in any way, you need to set the windows audio services to automatic start.



Should you want to order a product not listed in our shop, need technical assistance or have any questions, please **don't hesitate to contact us** via e-mail to shop@highend-audiopc.com. We are very confident that we will find the perfect solution for your setup.

Digital Audio Master Clock, 1G Audio Re-Clocker & USB Interface





JCAT USB Card FEMTO



JCAT Reference LAN Cable



JCAT Reference USB Cable



**SOtM dx-USB HD
USB/AES Converter**



SOtM tx-USBhubEx (external)



SOtM iSO-CAT6 LAN Isolator